

# Future Classroom Lab course: Future Classroom Scenarios

2-3 June 2013, Brussels

## Description

The Future Classroom Scenarios teacher workshop is a 12 hour course spread over two days in the European Schoolnet Future Classroom Lab in Brussels. The course gives participants an opportunity to work with other teachers from across Europe to develop innovative ideas for the future classroom, and to explore new approaches and technologies for use to enhance classroom delivery. The course is designed to give a hands on approach to help participants develop their own ideas about 21st Century Learning and the effective use of technology. The workshop is based on the results and toolkits from a pan-European iTEC project which is developing and testing future classroom scenarios in over 2000 classrooms across Europe.

The workshop participants will:

- Explore the use of the award winning “TeamUp” tool for managing group activity in the classroom.
- Share experiences with other teachers and learn about the capability of different technical settings in European Schools.
- Start to develop visions for the future classroom, following which, they discuss and analyse them and their impact on the future school environment.
- Explore Future Classroom ideas made possible by the range of hardware and software available in the Future Classroom Lab and its different learning zones.
- Collaborate on the development of innovative Future Classroom Scenarios based on trends and challenges in society and technology.
- Critically evaluate their own work to produce a Future Classroom Scenario, and decide how they can use the techniques they have used in support of their school development plans.

The workshop will take place at European Schoolnet’s Future Classroom Lab (<http://fcl.eun.org>) which is a fully equipped, reconfigurable, teaching and learning space developed by EUN, its 30 supporting Ministries of Education and leading educational technology providers.

## Agenda

Day 1 – Monday 2 June 2014: The Future is here	
9.30	<b>Introduction</b> <ul style="list-style-type: none"> <li>Welcome, introductions and presentation of the agenda.</li> <li>Ice breaking activity.</li> <li>Familiarisation with the course online platform (Schoology).</li> </ul>
10.15	<b>Setting the scene: I</b> <ul style="list-style-type: none"> <li>21<sup>st</sup> Century (transversal) skills and collaboration.</li> <li>Using TeamUp to organize group work.</li> <li>Tour of the Lab</li> </ul>
10.45	<b>Coffee break</b>
11.00	<b>Setting the scene: II</b> <ul style="list-style-type: none"> <li>Involving key stakeholders in creating a vision of the future.</li> <li>Identifying and ranking of Educational Trends</li> </ul>
12.45	<b>Lunch</b>
13.30	<b>The Future Classroom and a foresight approach</b> <ul style="list-style-type: none"> <li>Overview of the ITEC project's approach to development of Future Classroom. Scenarios with examples for inspiration.</li> <li>What makes a good Future Classroom Scenario?</li> </ul>
14.30	<ul style="list-style-type: none"> <li>Your School: Examples of teaching environments, roles and tools</li> <li>Presentation of classroom video examples.</li> </ul>
15.15	<b>Coffee break</b>
15.30	<b>Working with scenarios</b> <ul style="list-style-type: none"> <li>The Future Scenarios Toolkit for schools, exploring how to use it.</li> <li>How innovative is your classroom? – using the Innovation maturity model.</li> </ul>
16.30	<b>End of the day 1</b>
19:30 – 22:00	<b>Dinner at Bonsoir Clara Restaurant at the centre</b>

Day 2 – Tuesday 3 June 2014: Imagine your future		
<b>Parallel sessions:</b>		
09.30	<b>Building a scenario</b> <ul style="list-style-type: none"> <li>Working in groups to develop a Future Classroom Scenario.</li> </ul>	<b>Educational landscape in the future</b> <ul style="list-style-type: none"> <li>Changing educational landscape, changing teaching pedagogy supported by technology, student-centered learning, projects.</li> </ul>

		<ul style="list-style-type: none"> <li>Hands on activities in the FCL</li> </ul>
11.00	Coffee Break	
11.15	<b>Educational landscape in the future</b> <ul style="list-style-type: none"> <li>Repeating the earlier session</li> </ul>	<b>Building a scenario</b> <ul style="list-style-type: none"> <li>Repeating the earlier session</li> </ul>
12.45	Lunch	
13.30	<b>Presentation</b> Group video/animation presentation of the scenario.	
15.00	End of the day 2	

## Course trainers



**Bart Verswijvel** is a Flemish (Belgian) educator who was a Dutch teacher (mother tongue) in a secondary school for about 30 years. Since 2011 he has a part time job at the Flemish National Support Service for eTwinning in Brussels. Since March 2012 Bart has worked for European Schoolnet as a Pedagogical Adviser, and is involved in several projects like the Future Classroom Lab, iTEC, eTwinning and Living Schools Lab. He is especially interested in the integration of ICT in education and in project work. He is a freelance speaker, leader of workshops, prize winner in several competitions like eTwinning Awards and Microsoft Innovative Teachers, and a Microsoft Expert Educator. In 2010 Bart was awarded the Queen Paola Prize for Education.



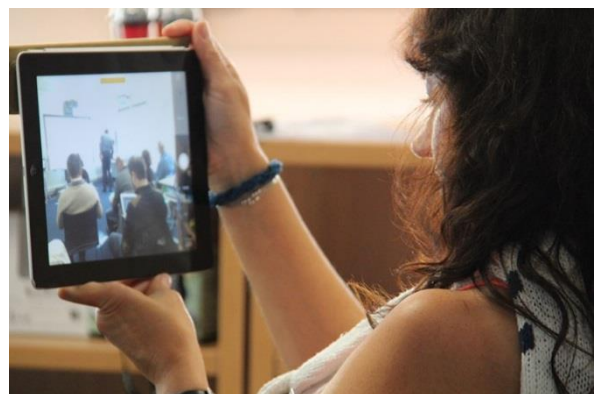
**Will Ellis** is working with European Schoolnet leading the European Commission-funded iTEC Project, a four year project that examines the potential classroom of the future. Will started as a science teacher and progressed to the post of project manager in the high profile UK Education Ministry ICT Test Bed Project. He then held the post of Senior Manager within Becta, the UK Government Agency responsible for educational technology strategy. In this position Will oversaw national strategy for learning tools and resources including the Learning Platform Services procurement framework, delivered to support schools purchase VLEs. Will also held responsibility for the annual BETT Awards.

## Course pre-activity

There is a pre-course activity the course trainers would like you to prepare before arriving to Brussels.

### You and your school video

We would like you to produce a short video (no longer than 100 seconds). This can be produced by a phone or tablet or any other video recording device you have access to. We are not expecting a professionally produced and edited video, so you don't need to take too much time producing it, maybe just 30 minutes or less. You do not need to provide any narrative (no voiceover, subtitles or music is needed).



Record your own working environment on video as follows:

- about 10 seconds of exterior shots of the school.
- about 30 seconds of premises where you work with the students, such as classroom, laboratory, etc.
- about 30 seconds of the educational technology that is available to you
- about 30 seconds of the places you like most in your school

To help you with this activity we have prepared an example video to watch at <http://youtu.be/vPAzlqldluY>. The demo video starts with some guidance on how to produce your own. The video file should be named, using your name, as follows: firstname\_lastname. Please bring your video with you on the first day of the workshop.

## How to arrive - Hotel

We have booked for you a room for two nights from 1 to 3 June (breakfast included) at the following hotel:

### Citadines Toison d'Or Brussels

Address: Avenue de la Toison d'Or 61-63, 1060 Brussels

[http://www.citadines.com/en/belgium/brussels/toison\\_d\\_or/apartment\\_types/studio\\_deluxe.html](http://www.citadines.com/en/belgium/brussels/toison_d_or/apartment_types/studio_deluxe.html)

### From Brussels National Airport (Zaventem):

- **By Train:** At the airport, go to the level -1 and take a train to Brussels. The train costs 8.5€ and the journey takes about 18 min.
  - If you leave the train at Gare Central (central station) you can **walk** to the hotel, about 2 km (25 min).
  - If you leave the train at Midi station (Sudstation) you can **either walk** to the hotel about 1.8 km (20 min) **or take the metro** (Line 2 and 6 direction Elisabeth) until "Louise". The metro ticket is about 2€.

### From Brussels South Airport (Charleroi):

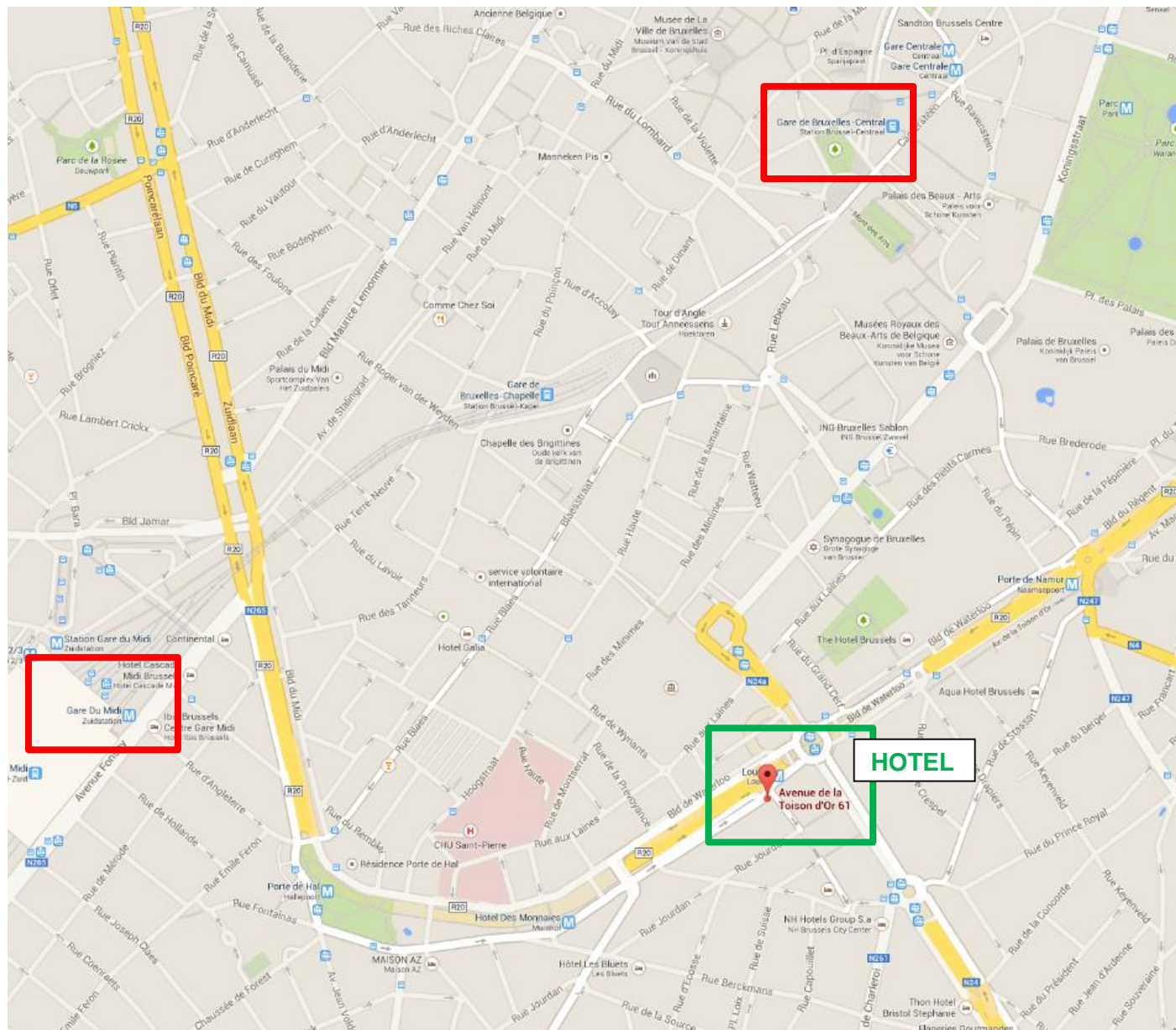
- Take the shuttle bus to the Brussels Midi station.
- From the Midi station, you can **either walk** to the hotel about 1.8 km (20 min) **or take the metro** (Line 2 and 6 direction Elisabeth) until "Louise". The metro ticket is about 2€.
- If you take a taxi from the Midi station to the hotel it costs about 10-15€.





## Larger map

Indicating the hotel location and the two main train stations: Gare Centrale and Midi Station



## More maps:

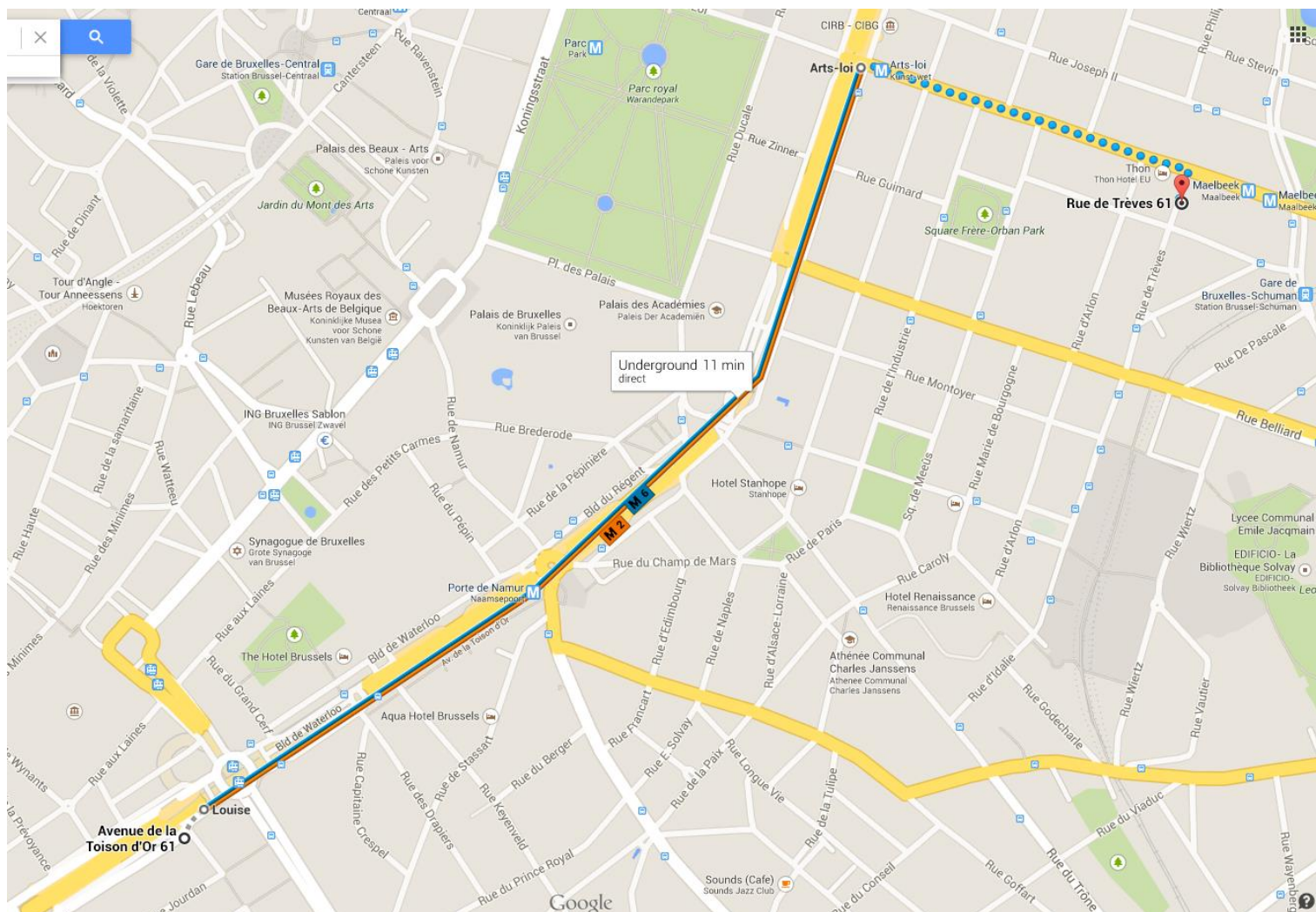
- Brussels metro network: [http://www.stib.be/irj/go/km/docs/STIB-MIVB/INTERNET/attachments/Plan\\_reseau/140212-plan\\_CHRONO.pdf](http://www.stib.be/irj/go/km/docs/STIB-MIVB/INTERNET/attachments/Plan_reseau/140212-plan_CHRONO.pdf)
- Map of Brussels via Google Maps: <http://www.brussels.be/artdet.cfm/6205>

## How to arrive - Workshop venue

European Schoonet / Future Classroom Lab  
Rue de Trèves 61, B-1040 Brussels

### How to arrive to the workshop from the hotel

- **By metro:** At "Louise" take the metro 2 or 6 (direction Elisabeth) until "Arts-Loi". Then Walk about 500m until Rue de Treves. The European Schoolnet office is opposite to the Thon EU hotel. The metro ticket is about 2€.
- **Walking:** Walk to the office about 2.2km (30 min)



Be aware of pick-pockets whenever you are in public places,  
especially when using public transports!